

Affordable, Fast,
Professional Colour Printers

Aficio™ CL7200/CL7300



RICOH
Image Communication

Your First Choice for Cost Effective Colour



For high quality in-house colour printing, look no further than the Aficio™CL7200/CL7300. Delivering up to 35 ppm A4 in full colour at up to 1,200 dpi, these units represent a cost saving alternative to outsourcing print jobs. From newsletters to direct mailings and presentations, both units are ideal for daily office print work. With low purchase price and running costs, these systems offer professional printing at a highly competitive Total Cost of Ownership. The CL7200 is the ideal low maintenance solution for general office needs, delivering high quality B/W and colour prints at low cost per print. The CL7300 meets the more advanced needs of creative businesses and communications departments with higher speeds and standard duplexing. The Aficio™CL7200/CL7300 are developed for high quality, high speed output whatever your printing needs. These units join Ricoh's comprehensive line-up of printing solutions, from compact digital desktops to larger workgroup printers.

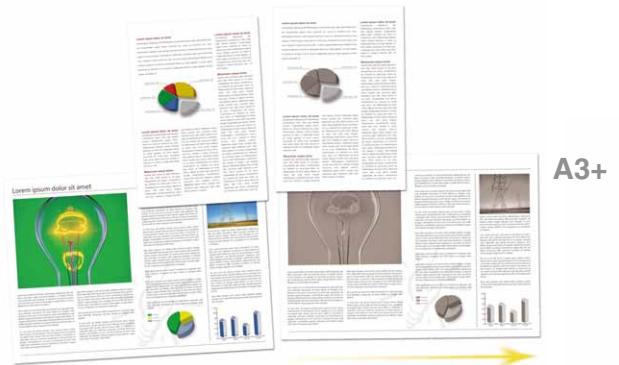


Professional Quality at a Fraction of the Cost

The Aficio™CL7200/CL7300 provide the best of both worlds; these high speed colour laser printers offer a range of advanced quality and features at a remarkably competitive price. Whatever your office needs, these models bring you closer to the answer.

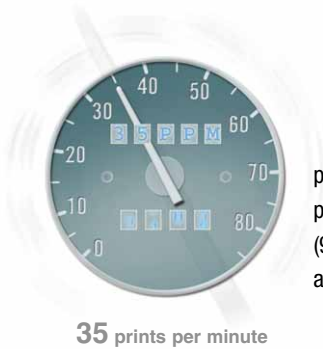
Cost Effective On-demand Colour Output for the General Office

Full colour printing from A6 up to A3 has never been more cost effective. Low initial outlay and running costs make these systems the smartest office purchase. Choose the CL7200 for daily print work involving standard MS Office documents, or the CL7300 for more advanced graphic output such as newsletters or direct mailings.



Enhanced Performance & Productivity

Rapid developments in printing performance mean that the Aficio™CL7200/CL7300 produce colour prints at similar speeds to B/W prints. The combination of short warm up time (95 seconds), fast first print (under 12 seconds) and speeds up to 35 ppm make these printers valuable assets to any busy office.



Professional Style Documents

Make a real impression on your clients with professional quality documents, produced in-house at a fraction of the cost of outsourcing. With the Aficio™CL7200/CL7300, you can create finished stapled booklets in a range of paper sizes and types, including glossy and thick paper. With Ricoh's RPCS™ driver installed, each print is only 1 mouse click away, since you can save print quality and finishing settings using the icon driven menu. Once you save your preferred settings, a one click command is all it takes.



2,000-sheet finisher (SR960)



Booklet finisher (SR950)

Faster Networking

The revolutionary Gigabit Ethernet is 100 times faster than the original Ethernet, enabling the Aficio™CL7200/CL7300 to process print jobs much faster. This is supported by a high performance controller, and the ability to print in duplex at similar speed to single-sided (standard on CL7300).

Advanced Printing Solutions

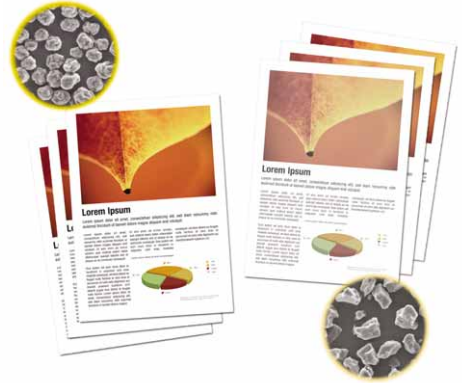
To safeguard your workflow while keeping your network free of unnecessary traffic, the Aficio™CL7200/CL7300 offer Sample Print™, Locked Print™ and Storage Print™ for unrivalled document flexibility and security. You can proof your document for errors before a large print run or suspend printing while away from the device. And you can store documents permanently on the device: ideal for simple access to documents you print regularly (like invoice or expense slips). With PDF Direct Print you can also print PDF files without accessing Adobe® Acrobat® – thus reducing your network traffic and saving valuable time.



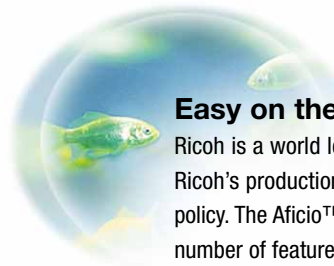
High Quality Colour Output

When quality is essential, the Aficio™CL7200/CL7300 really make an impact. Enhanced colour registration with stable imaging and reproduction make every image crisp and clear. Because both units use oil-free polymerisation toner, you save on energy costs too.

Polymerisation toner



Conventional toner

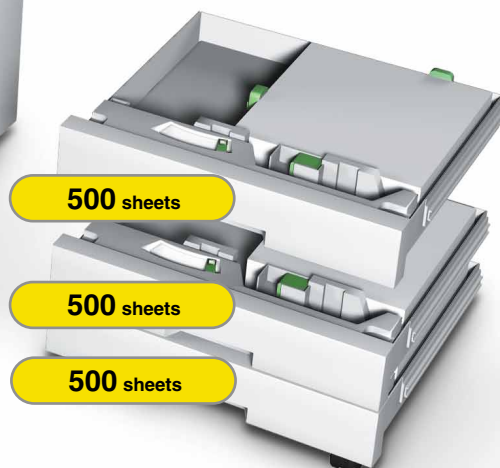


Easy on the Environment

Ricoh is a world leader in low environment impact. Everything in Ricoh's production and administrative units is tied to a zero waste policy. The Aficio™CL7200/CL7300 adhere to this policy, with a number of features including:

- Oil-free polymerisation toner – 35% less CO₂, uses 40% less toner, while saving energy through shorter warm up time.
- Duplex printing for economical paper use.
- Compliance with European RoHS directive.*

* The 'Restrictions on Hazardous Substances (RoHS)' directive limits the use of substances such as lead, cadmium and hexavalent chromium in electronic goods.



Safety Net

Ricoh has a worldwide presence. Our all-encompassing service and support organisation enables you to get the most out of your Aficio™ device resulting in optimum document handling performance.

The image on these pages is not a real photograph and slight differences in detail might appear.

First for Security & Connectivity

Office productivity can be affected by a number of factors, and the Aficio™CL7200/CL7300 have been designed with this in mind. A range of security features protect data traffic to and from the device. Operation and maintenance of both models is simple, a significant benefit in terms of time management, which is further helped with the bundled administration and monitoring tools.

Good News for the Security Conscious Network

Security is essential in any office environment. The Aficio™CL7200/CL7300 integrate advanced features as standard on the CL7300. HDD Erase lets you erase all data held on the device, while 'Print data overwrite' overwrites information in the device's buffer. Data encryption via IPP ensures that confidential information remains that way.

Connects in Virtually Any Network Environment

The Aficio™CL7200/CL7300 were designed to seamlessly and reliably connect to your office network, making these models clear favourites with IT managers. Whether PC or Macintosh, bundled software recognises and connects each node in your network, with full support for most network types.

Camera Direct Print Card

This new handy feature allows you to connect any digital camera directly to the printer – no need to download pictures via a PC.

Easy Operation & Maintenance

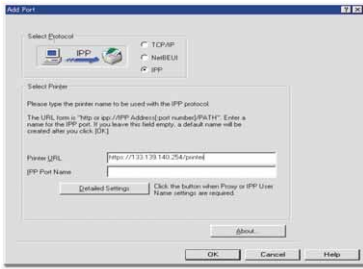
Developed for ease of use, Aficio™CL7200/CL7300 both feature an intuitive operation panel. They also take the work out of maintenance, with fast and simple replacement of consumables.

Easy Administration

Both units offer embedded network administration tools, with e-mail alerts and remote operation panels, making it easier than ever to monitor and manage the print workload.

Enhanced Document Distribution Capabilities

Connect a Ricoh scanner to the Aficio™CL7200/CL7300 and you can quickly and easily satisfy the document distribution needs of your busy office. With a number of distribution methods, scanned digital files can be sent via e-mail or saved to a designated network folder. Scanned files can also be shared conveniently by sending them to an FTP server.



Confidential information remains that way thanks to data encryption via IPP.



HDD Erase lets you erase all data held on the device, while 'Print data overwrite' overwrites information in the device's buffer: optimum security guaranteed!



Aficio™ CL7200/CL7300

Specifications



GENERAL

Technology:	4 drums tandem method, laser beam scanning, electro photographic printing & dual component toner development	
Continuous print speed:	Black and white:	32/35 prints per minute
	Full colour:	28/35 prints per minute
Warm up time:	Less than 95 seconds	
First print speed:	B/W / full colour:	Less than 11/12 seconds
Dimensions (W x D x H):	Aficio™CL7200:	575 x 678 x 745 mm
	Aficio™CL7300:	670 x 678 x 745 mm
Weight:	Aficio™CL7200:	85 kg
	Aficio™CL7300:	97 kg
Power source:	220 - 240 V, 50/60 Hz	
Power consumption:	Maximum:	
	Aficio™CL7200:	Less than 1.44 kW
	Aficio™CL7300:	Less than 1.55 kW
	Energy saver mode:	Less than 26 W
Duty cycle:	200,000 pages per month	

CONTROLLER

Processor:	Celeron 733 MHz	
Printer language/ resolution:	PCL5c:	300 x 300 dpi/600 x 600 dpi
	PCL6, Adobe® PostScript® 3™:	600 x 600 dpi
		1,200 x 600 dpi/1,200 x 1,200 dpi
	RPCS™:	300 x 300 dpi (B/W only)/600 x 600 dpi/1,200 x 600 dpi/1,200 x 1,200 dpi
Memory:	Standard:	256 MB + 40 GB Hard Disk Drive (option for the Aficio™CL7200)
	Maximum:	512 MB
Drivers:	PCL5c/PCL6/RPCS™:	Windows® 95/98SE/Me/NT4.0/2000/XP/ Server 2003
	Adobe® PostScript® 3™:	Windows® 95/98SE/Me/NT4.0/2000/XP/ Server 2003
		Macintosh 8.6 - 9.2.x (OS X Classic)
		Macintosh X v10.1/10.2/10.3 or later (native mode), UNIX
Fonts:	PCL5c/PCL6:	35 intelli fonts, 10 true type fonts
	Bitmap font (31 fonts can be downloaded)	13 fonts (International Font)
	Adobe® PostScript® 3™:	136 Adobe® type 1 fonts

CONNECTIVITY

Network protocol:	TCP/IP, IPX/SPX, SMB (NetBEUI), NetBIOS over TCP/IP, AppleTalk	
Supported networks:	Windows® 95/98SE/Me/NT4.0/2000/XP/ Server 2003	
	Novell® NetWare®3.12/3.2/4.1	4.11/5.0/5.1/6/6.5
	UNIX Sun® Solaris 2.6/7/8/9	
	HP-UX 10.x/11.x/11i v1/11i	
	SCO OpenServer 5.0.6	



RedHat® Linux 6.x/7.x/8.x/9.x/Enterprise
 IBM® AIX v4.3 & 5L v5.1/5.2
 Macintosh 8.6 - 9.2.x
 Macintosh X v10.1/10.2/10.3
 or later (native mode)
 SAP® R/3® 3.x or later

Interface:	Standard:	Ethernet 10 base-T/100 base-TX USB 2.0
	Option:	Bi-directional IEEE 1284, FireWire (IEEE 1394), Wireless LAN (IEEE 802.11b) Bluetooth, Gigabit Ethernet
Network utilities:	Standard:	DeskTopBinder™ Lite SmartDeviceMonitor™ for Admin/Client Web SmartDeviceMonitor™
	Option:	Web Image Monitor, Printer utility for Macintosh, Font Manager 2000 Document management utilities & professional software versions
Additional feature:	PDF Direct Print	

PAPER HANDLING

Paper input capacity:	Standard:	2 x 500-sheet paper trays
	Maximum:	1 x 100-sheet bypass tray 3,100 sheets
Paper output capacity:	Standard:	500 sheets face down
	Maximum:	3,100 sheets
Paper size:	Paper trays:	A5 - A3
	Bypass tray:	A5 - A3 oversize
Paper weight:	Paper trays:	60 - 105 g/m ²
	Bypass tray:	60 - 163 g/m ²
Media:	Plain paper, recycled paper, transparencies, laser printer labels, envelopes	

CONSUMABLES

Toners:	Black:	24,000 sheets ²
	C, M, Y:	10,000 sheets ²
The Aficio™CL7200/CL7300 ship with a starter kit.		

OPTIONS

Internal options:	64/128/256 MB SDRAM DIMM, Bi-directional IEEE 1284, FireWire (IEEE 1394), Wireless LAN (IEEE 802.11b), Bluetooth, Gigabit Ethernet, Camera Direct Print Card, User Account Enhance Unit, 40 GB Hard Disk Drive (standard for the Aficio™CL7300)	
External options:	1 - 2 x 500-sheet paper trays, 2,000-sheet large capacity tray, 2,000-sheet finisher (SR960) with 50-sheet stapler, Punch unit for SR960 (2/4 hole & 4 hole), 1,000-sheet booklet finisher (SR950), Punch unit for SR950 (2/4 hole & 4 hole), Duplex unit (standard for the Aficio™CL7300)	

¹ Only supported by SmartDeviceMonitor™.
² A4 with 5% coverage.

For availability of models, optional apparatus and software, please consult your local Ricoh supplier.



ISO9001: 2000 certified
 ISO14001 certified

Ricoh has determined that these products meet the ENERGY STAR guidelines for energy efficiency.

Ricoh believes in conserving the earth's precious natural resources.

All brand and/or product names are trademarks of their respective owners.

Specifications and external appearance are subject to change without notice. The colour of the actual product may vary from the colour shown in the brochure.

Copyright © 2005 Ricoh Europe B.V. All rights reserved. This brochure, its contents and/or layout may not be modified and/or adapted, copied in part or in whole and/or incorporated into other works without the prior written permission of Ricoh Europe B.V.

For more information, please contact:

RICOH EUROPE B.V.
 P.O. Box 114, 1180 AC Amstelveen,
 The Netherlands.
 Phone: +31 (0)20 54 74 111
 Fax: +31 (0)20 64 18 601

www.ricoh-europe.com