

Reliable
Desktop Colour

Aficio™ CL3100N/CL3100DN



RICOH
Image Communication

The Efficient A4 Colour Laser Printer



Today, no one can avoid the need for cost effective colour in the office. The Aficio™CL3100N/CL3100DN are new generation colour laser printers designed with a low total cost of ownership in mind as well as high reliability, easy operation and expansion. The Aficio™CL3100N is the starting model with optional double sided printing. The Aficio™CL3100DN comes completely pre-installed. Whichever model you choose, you obtain an easy to set up printer with everything you need in an affordable package. Even with all options installed, the Aficio™CL3100N/CL3100DN have an amazingly small footprint. Drivers and software utilities are compatible with all common network environments, but there is more, these print solutions come with peace of mind. As the leading office automation manufacturer, Ricoh has built up a solid worldwide organisation to back up this claim.



Performance and Ease of Use

High productivity is a key ingredient in your office. You demand the same from your print solution. With the Aficio™CL3100N/CL3100DN you cannot go wrong: prints are on your desk in no time – even duplex output. Thanks to RPCS™, the systems' icon based printing facility, printing time is minimised and colour printing becomes quick and easy.

Efficient Speed

The Aficio™CL3100N/CL3100DN help you be productive with full colour prints on your desk at 17 ppm (black and white 21 ppm), a first print speed of 15.5 seconds and 30-second warm up time. Even double sided output comes out at virtually the same speed as single page prints!

Easy Colour

Part of a new generation of Ricoh printers, these systems support PCL5c and genuine Adobe® PostScript® 3™. In addition, they offer easy to use one click printing via RPCS™. The 1,200 x 1,200 dpi colour output makes your MS Office reports, graphs and presentations look better than ever.

High Performance A4 Colour Laser Printing

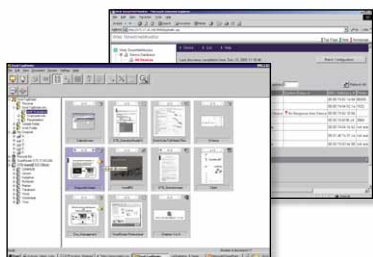
With the Aficio™CL3100N/CL3100DN, Ricoh offers two colour laser print solutions with outstanding capabilities in a compact design. These systems are highly productive with a high geared engine, easy maintenance and management as well as environmental benefits.



Duplex virtually equals single sided output: you save paper costs and reduce the impact on the environment.



Professional prints are a guarantee thanks to an outstanding 1,200 x 1,200 dpi output resolution.



Monitoring and tracking the status of networked peripherals can be done through common web browsers: easy and efficient.

Works in Every Environment

The Aficio™CL3100N/CL3100DN support any type of connectivity: Ethernet or optional Wireless LAN, IEEE 1394 and Bluetooth. Direct PC to printer connectivity is available too. Common Microsoft® Windows® and Mac are supported, various UNIX and Linux flavours.

Small Saves Money

The Aficio™CL3100N/CL3100DN save on expensive office floor space and easily compete with the colour inkjet printers used for individual colour printing. In fact, it will be hard to find an inkjet as cost effective and all-round as the CL3100N/CL3100DN.

Advanced Device Monitoring

Via Web Status Monitor and Web SmartDeviceMonitor™ you can monitor the status of networked peripherals through common web browsers. With SmartDeviceMonitor™ for Admin, IT Managers and network administrators can set user privileges and obtain complete job statistics.

Optimal Document Management

The Aficio™CL3100N/CL3100DN come with DeskTopBinder™ V2 Lite, a versatile workflow integration software tool that allows you to merge different formats into one file.

Easy Maintenance and Expansion

Maintaining and expanding the Aficio™CL3100N/CL3100DN is effortless and cost efficient. With paper handling options installed, a 1,690-sheet paper capacity is available.

Enhanced Efficiency & Confidentiality

The Aficio™CL3100N/CL3100DN support Sample Print™, allowing you to print the first set of your job, before releasing the remainder at the printer's operation panel. Locked Print™ holds your documents in the systems' memory until you enter a user ID and password. Ideal features to optimise paper saving and maximise security.

Environmental Care

Ricoh is world leader in low environmental impact. The Aficio™CL3100N/CL3100DN comply with Energy Star® Tier 2 specifications and use oil-less toner. High speed duplexing is available and standby power consumption is a money saving 11 W.

Safety Net

Ricoh has a worldwide presence. Our all-encompassing service and support organisation enables you to get the most out of your Aficio™ device and find the optimum performance for your document handling.



With their wireless applications, these print solutions free your office from cables.



Aficio™ CL3100N/CL3100DN

Specifications



GENERAL

Technology:	4 drums tandem method, laser beam scanning, electro photographic printing & mono component toner development	
Continuous print speed (simplex):	Black and white: 21 prints per minute (A4)	Full colour: 17 prints per minute (A4)
Warm up time:	30 seconds or less	
First print speed:	Black and white/full colour: 15.5 seconds or less	
Dimensions (W x D x H):	419 x 536 x 395 mm	
Weight:	32 kg or less	
Power source:	220 - 240 V, 50/60 Hz	
Power consumption:	Maximum:	1.3 kW
	Energy saver mode:	11 W
Duty cycle:	50,000 pages per month	

CONTROLLER

Processor:	RM7065 400 MHz	
Printer languages/ resolution:	PCL5c: 300 x 300 dpi/600 x 600 dpi	Adobe® PostScript® 3™: 600 x 600 dpi
	1,200 x 600 dpi/1,200 x 1,200 dpi	
	RPCS™: 300 x 300 dpi/600 x 600 dpi	1,200 x 600 dpi/1,200 x 1,200 dpi
Memory:	Standard:	128 MB
	Maximum:	384 MB
Drivers:	PCL5c/RPCS™: Windows® 95/98/Me/NT4.0/2000/XP Server 2003	
	Adobe® PostScript® 3™: Windows® 95/98/Me/NT4.0/2000/XP Server 2003	
	Macintosh 8.6 - 9.2, Macintosh X v10.1 or later (native mode), UNIX	
Fonts:	PCL5c: 35 intelli fonts	10 true type fonts
	1 bitmap font (31 fonts can be downloaded)	
	Adobe® PostScript® 3™: 136 Adobe® type 1 fonts	

CONNECTIVITY

Network protocol:	TCP/IP, IPX/SPX, SMB (NetBEUI, NetBIOS over TCP/IP), AppleTalk	
Supported networks:	Windows® 95/98/Me/NT4.0/2000/XP Server 2003	
	Novell® NetWare® 3.12, 3.2, 4.1, 4.11, 5.0, 5.1, 6	
	UNIX Sun® Solaris 2.6/7/8/9, HP-UX 10.x/11.00	
	SCO OpenServer 5.x	
	RedHat® Linux 6.x/7.x	
	IBM® AIX v4.3/5L v5.1	
	Macintosh 8.6 - 9.2.x (OS X Classic)	
	Macintosh X v10.1 or later (native mode)	

Interface:	Standard:	Ethernet 10 base-T/100 base-TX Bi-centronics IEEE 1284 ECP USB 2.0
	Option:	IEEE 1394 Wireless LAN (IEEE 802.11b) Bluetooth
Network utilities:	DeskTopBinder™ V2 Lite SmartDeviceMonitor™ Web SmartDeviceMonitor™ Web Status Monitor Printer utility for Macintosh Font Manager 2000	

PAPER HANDLING

Paper input capacity:	Standard:	530-sheet paper tray 100-sheet bypass tray
	Maximum:	1,690 sheets
Paper output capacity:	Standard:	250 sheets
Paper size:	A4 - B5/A6	
Paper weight:	Paper trays:	60 - 105 g/m ²
	Bypass tray:	60 - 165 g/m ²
Media:	Plain paper, recycled paper, thick paper, transparencies, laser printer labels, envelopes	

CONSUMABLES

Toners:	Black/C, M, Y:	5,500 sheets (long yield) ¹
	C, M, Y:	2,500 sheets (short yield) ¹

OPTIONS

Internal options:	10 GB Hard Disk Drive 64/128/256 MB SDRAM DIMM IEEE 1394 Wireless LAN (IEEE 802.11b) Bluetooth	
External options:	2 x 530-sheet paper tray Duplex unit (Aficio™CL3100N)	

¹ A4 with 5% coverage

For availability of models, optional apparatus and software, please consult your local Ricoh supplier.



ISO9001: 2000 certified
ISO14001 certified

Ricoh has determined that these products meet the ENERGY STAR guidelines for energy efficiency.

Ricoh believes in conserving the earth's precious natural resources.

All brand and/or product names are trademarks of their respective owners.

Specifications and external appearance are subject to change without notice. The colour of the actual product may vary from the colour shown in the brochure.

RICOH
Image Communication

For more information, please contact:

RICOH EUROPE B.V. Groenelaan 3,
P.O. Box 114, 1180 AC Amstelveen,
The Netherlands.
Phone: +31 (0)20-5474111
Fax: +31 (0)20-6418601

www.ricoh-europe.com